



**MEGA FORTRIS**  
G R O U P

## **INDICATIVE SEAL**

### **FAST SEAL (FS)**

Pull-Tight Seal

***Versatile security seal for various industry needs.***

Fast Seal is the icon in the indicative family. It offers various options for strap length to complement the different applications. Its slim round strap makes it suitable for small hole latches. This is the most versatile choice for security and authentication purposes.

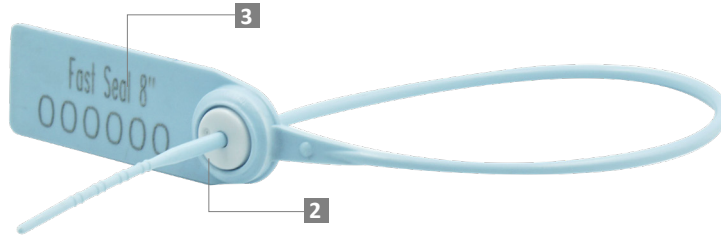
#### **Applications:**

- Retail Applications
- Authentication Tagging
- Logistics
- Banking



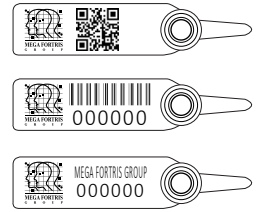
**PREVENTION · PROTECTION · PEACE OF MIND**



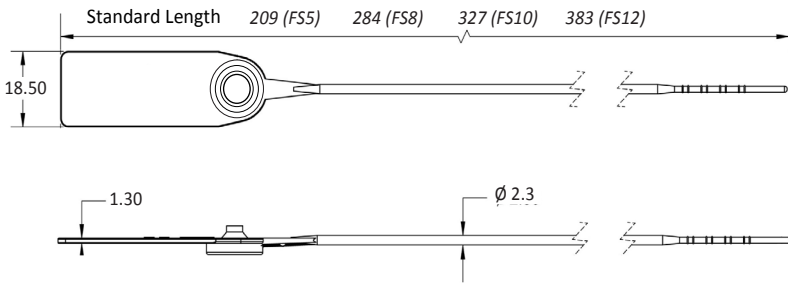


- 1** The Fast Seal is moulded with Polypropylene (PP) or high-impact Nylon (NY) material with the metal lock ultrasonically encapsulated for greater security and clear evidence of tampering.
- 2** One-way locking mechanism is embedded for fast and easy application.
- 3** Irreversible identifiers such as name, logo, barcode, serial number and QR code are laser-marked on the flap.
- 4** Biodegradable additives for plastic material are available.
- 5** Different strap lengths are available to cater to different applications.
- 6** Tear-off (TO) variation available in 5" and 8" for easy removal.

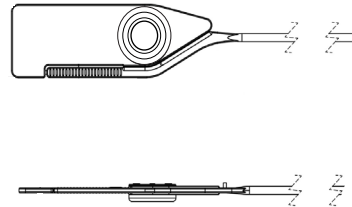
**LASER MARKING OPTION**



**VIEW APPLICATION GIF**



FS TO - 5 and 8



**TECHNICAL SPECIFICATIONS**

**PRODUCT - FAST SEAL (FS)**

Code	Material	Locking Length	Locking Size	Tensile Strength	Marking Area	Max Marking Digits
<b>FS5</b>	<b>Plastic :</b> Polypropylene (PP) Temperature Range: -5°C to 80°C High-impact Nylon (NY) Temperature Range: -5°C to 80°C	128 mm (5 in)	Ø 2.3 mm (0.1 in)	<b>PP:</b> ≥15 kgf (≥33.1 lbf) <b>NY:</b> ≥18 kgf (≥39.7 lbf)	14 x 34 mm (0.6 x 1.3 in)	<b>Serial no : 13</b> <b>Barcode : 12</b>
<b>FS8</b>		203 mm (8 in)				
<b>FS10</b>		245 mm (10 in)				
<b>FS12</b>	301 mm (12 in)					
<b>Metal Jaw :</b> Stainless Steel (SUS 304)						

**PACKAGING**

Carton	Quantity	Dimensions (mm)	Gross Weight (kg)	Volume (m <sup>3</sup> )	Standard Pastel / Solid Colours
<b>FS5</b> Inner	1000	279 x 225 x 190 (11.0 x 8.9 x 7.5 in)	2.3 - 2.65 (5.1 - 5.8 lb)	0.012 (0.4 cu.ft.)	<b>Polypropylene :</b> Body : <span>WH</span> <span>PSYL</span> <span>PSOR</span> <span>PSRD</span> <span>PSBL</span> <span>PSGN</span> Cap : <span>TRNS</span> <span>WH</span> <span>MILKY (BIO)</span> <b>Nylon :</b> Body : <span>WH</span> <span>B</span> <span>YL</span> <span>G</span> <span>RD</span> Cap : <span>TRNS</span> <span>WH</span> <span>MILKY (BIO)</span>
<b>FS8</b> Inner		2.68 - 3.01 (5.91 - 6.64 lb)	450 x 195 x 165 (17.7 x 7.7 x 6.5 in)	0.014 (0.5 cu.ft.)	
<b>FS10</b> Inner		2.61 - 3.17 (5.75 - 6.99 lb)			
<b>FS12</b> Inner		3.14 - 3.25 (6.92 - 7.17 lb)			

For colour customisations, kindly contact us for further information.

**Updated Date : 17 August 2021**